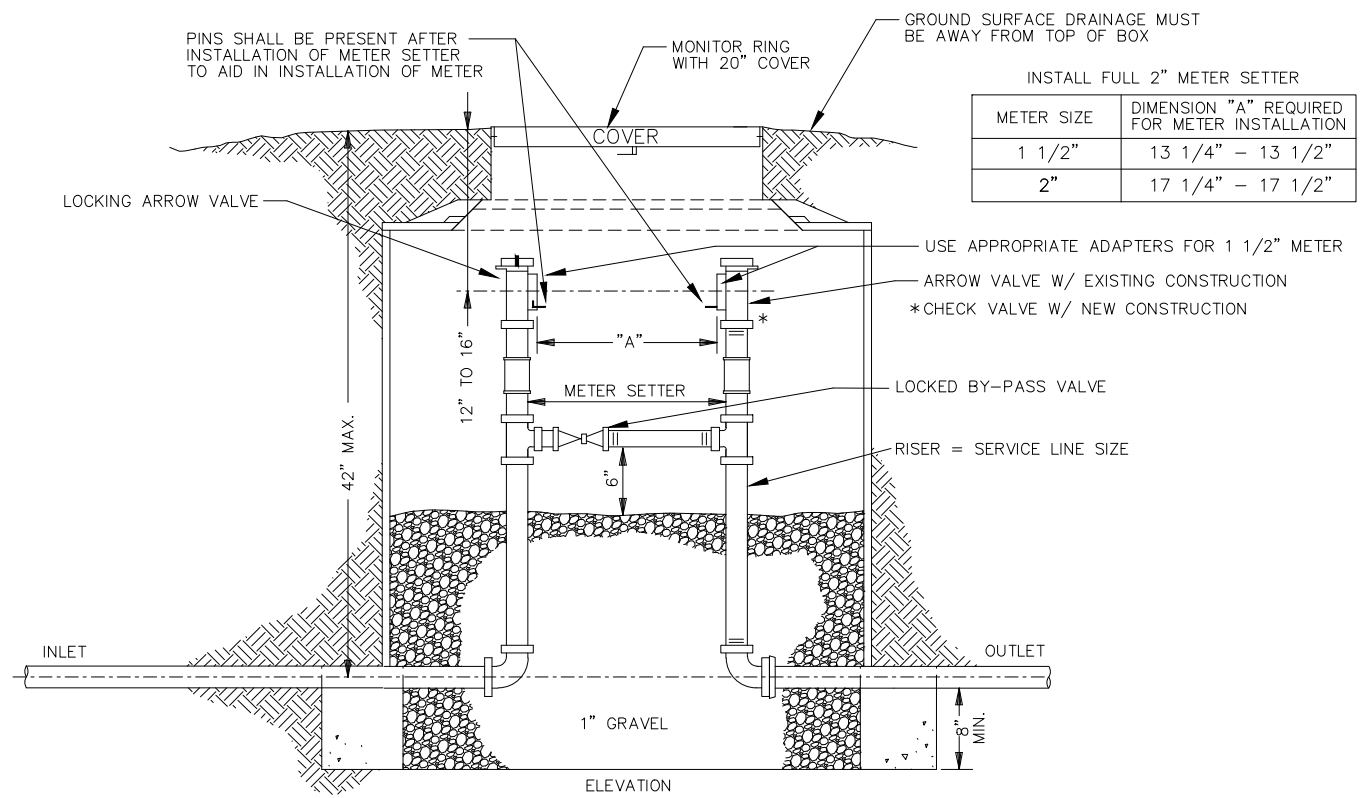
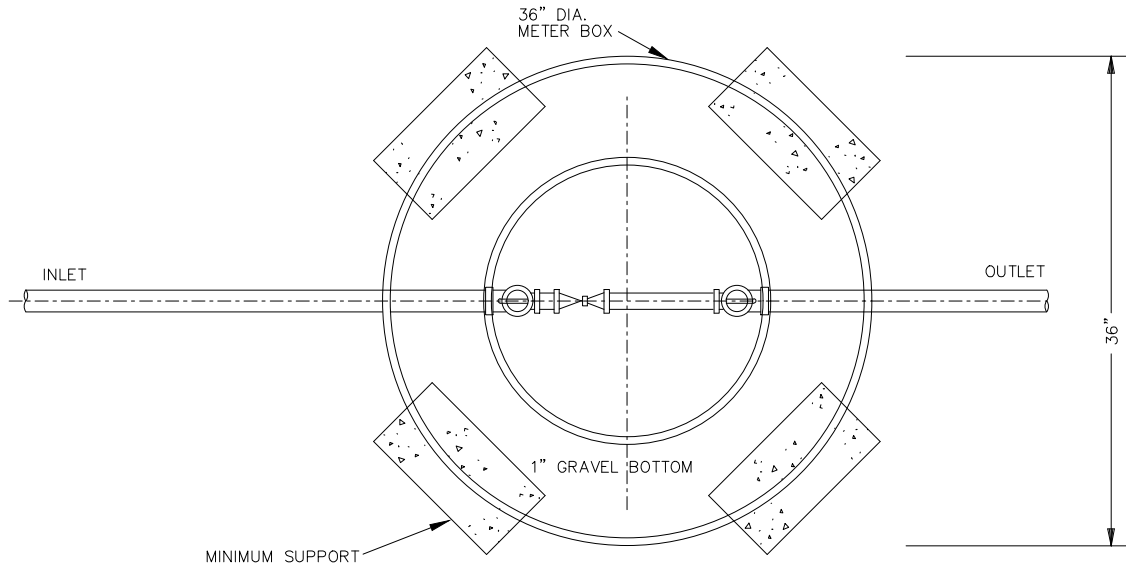




**MISSOURI  
AMERICAN WATER**

FILE NO. \_\_\_\_\_  
 INDEX NO. \_\_\_\_\_  
 ISSUED DATE 04-2021  
 AMENDED DATE \_\_\_\_\_



INSTALL FULL 2" METER SETTER

METER SIZE	DIMENSION "A" REQUIRED FOR METER INSTALLATION
1 1/2"	13 1/4" - 13 1/2"
2"	17 1/4" - 17 1/2"

- LIDS AND FRAMES OF OPENING TO BE SET IN PLACE NOT IN CONCRETE
- METER SETTER MUST BE STAKED AND BANDED ON EACH END TO PROVIDE ADEQUATE SUPPORT
- METER BOX TO BE LOCATED IN AREA OTHER THAN TRAFFICWAY AND WHERE SURFACE WATER WILL NOT DRAIN INTO IT.
- COPPER OR HDPE (AS APPROVED BY MAWC) MUST EXTEND A MIN. OF 4" FROM OUTLET SIDE OF BOX.
- SERVICE CONNECTION TO PUBLIC WATER MAIN WILL NOT BE MADE BEFORE METER PIT AND PIPING ARE COMPLETE UNLESS APPROVED BY AN AUTHORIZED COMPANY REPRESENTATIVE.
- IF HDPE IS APPROVED AND UTILIZED, THE CORRECT METER SETTER TO BE USED WITH HDPE PIPING.

SUBJECT TO REVISION WITHOUT NOTICE 04-22-2021

**METER BOX FOR 1 1/2"-2"  
RESIDENTIAL & COMMERCIAL SERVICES**

PRINT AND READ DISCLAIMER WITH ALL MAWC DRAWINGS

CAD /DISTRIB/DETAILS/METERBOX/METERBOX\_20200821.DWG